

Sightreading Steps



LOOK at the piece before you play

Plan your starting position and look for patterns.

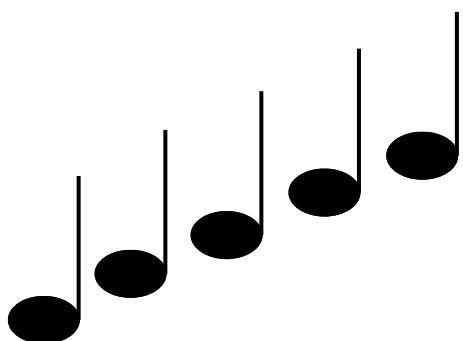


Choose a SLOW tempo

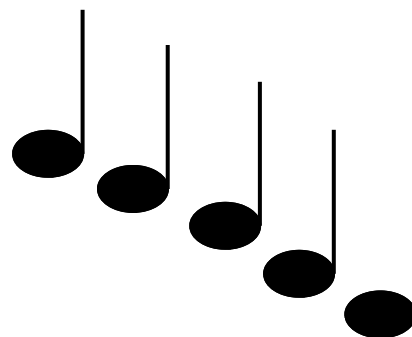
Your goal is to be as accurate and steady as you can.

Describe each pattern. Do the notes get higher, lower, stay the same, etc? Pick a spot on the piano to play each one.

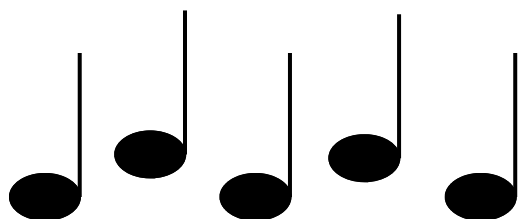
1A



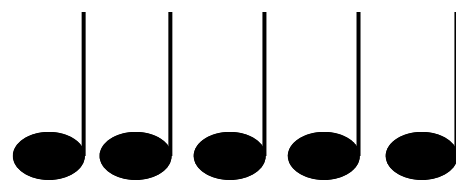
1B



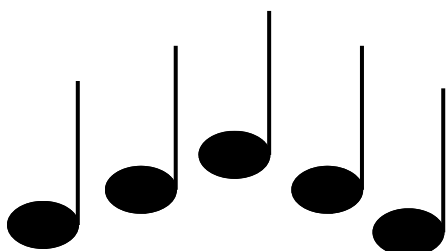
2A



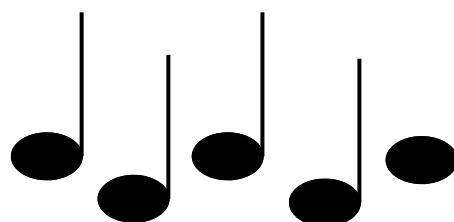
2B



3A



3B



Sightreading Steps



LOOK at the piece before you play

Plan your starting position and look for patterns.



Choose a SLOW tempo

Your goal is to be as accurate and steady as you can.

4

1

f

Exercise 4: Treble clef, 4/4 time signature. The piece starts with a first finger fingering (1) above the first measure. The notes are: C4 (quarter), C4 (quarter), D4 (quarter), E4 (quarter), F4 (quarter), G4 (quarter), A4 (quarter), B4 (quarter), C5 (half). The dynamic marking is *f*.

5

5

p

Exercise 5: Bass clef, 4/4 time signature. The piece starts with a fifth finger fingering (5) above the first measure. The notes are: C3 (quarter), D3 (quarter), E3 (quarter), F3 (quarter), G3 (quarter), A3 (quarter), B3 (quarter), C4 (quarter), D4 (half). The dynamic marking is *p*.

6

1

mf

Exercise 6: Treble clef, 4/4 time signature. The piece starts with a first finger fingering (1) above the first measure. The notes are: C4 (quarter), D4 (quarter), E4 (quarter), F4 (quarter), G4 (quarter), A4 (quarter), B4 (quarter), C5 (quarter), D5 (quarter), E5 (quarter), F5 (quarter), G5 (quarter), A5 (quarter), B5 (quarter), C6 (half). The dynamic marking is *mf*.

Sightreading Steps



LOOK at the piece before you play

Plan your starting position and look for patterns.



Choose a SLOW tempo

Your goal is to be as accurate and steady as you can.

7

5

p

8

1

f *p*

9

5

mf

Sightreading Steps



LOOK at the piece before you play

Plan your starting position and look for patterns.



Choose a SLOW tempo

Your goal is to be as accurate and steady as you can.

10

1

p

A musical staff in treble clef with a 4/4 time signature. It contains a sequence of notes: quarter notes G4, A4, B4, C5, quarter notes D5, E5, F5, G5, quarter notes A5, B5, C6, and a whole note D6. A finger number '1' is written above the first note. The dynamic marking '*p*' is below the staff.

11

1

f

A musical staff in bass clef with a 4/4 time signature. It contains a sequence of notes: quarter notes G2, A2, B2, C3, quarter notes D3, E3, F3, G3, quarter notes A3, B3, C4, and a whole note D4. A finger number '1' is written above the first note. The dynamic marking '*f*' is below the staff.

12

5

f *p*

A musical staff in treble clef with a 4/4 time signature. It contains a sequence of notes: quarter notes G4, A4, B4, C5, quarter notes D5, E5, F5, G5, quarter notes A5, B5, C6, and a whole note D6. A finger number '5' is written above the first note. The dynamic marking '*f*' is below the first note, and '*p*' is below the last note.