

# Harmonize a Melody: All Through the Night



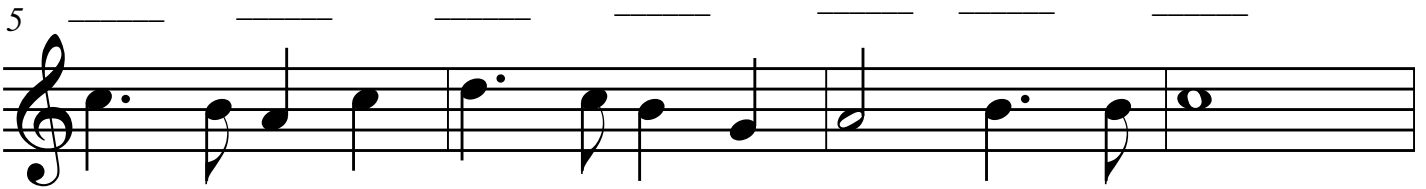
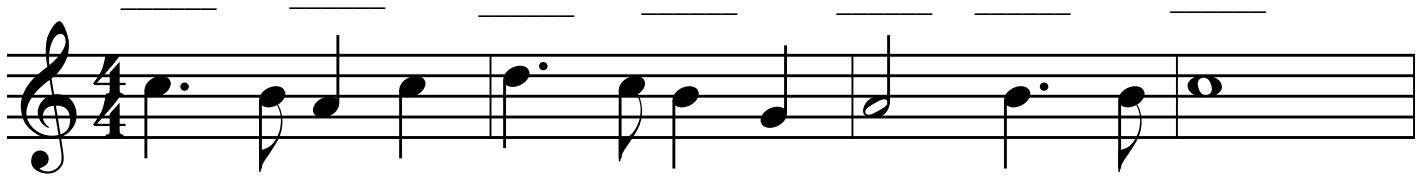
Write a chord symbol in the blanks above each measure to create an accompaniment for this melody.

This melody is in the key of \_\_\_\_\_ Major

Spell each of these chords:

I: \_\_\_\_\_ ii: \_\_\_\_\_

IV: \_\_\_\_\_ V7: \_\_\_\_\_



Play the melody and add a LH accompaniment using:

\_\_\_\_\_ Block chords    \_\_\_\_\_ Broken Chords (close position)    \_\_\_\_\_ Broken Chords (open position)