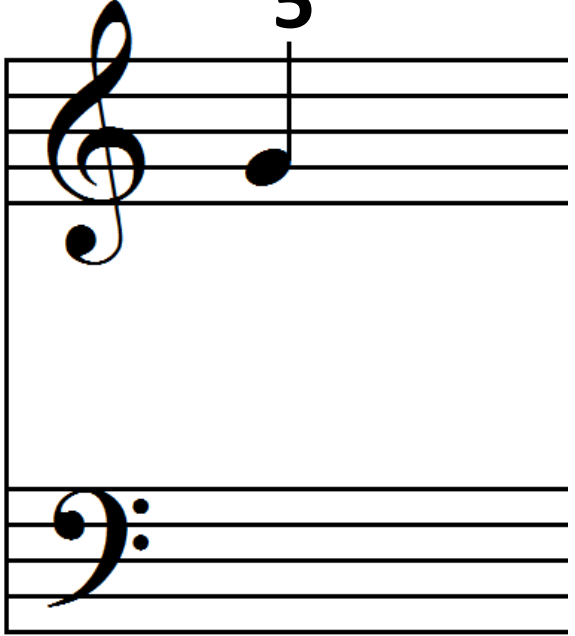


1



Musical notation for finger 1. The treble clef staff shows a quarter note on the first line (F4). The bass clef staff is empty.

5



Musical notation for finger 5. The treble clef staff shows a quarter note on the fifth line (C5). The bass clef staff is empty.

2



Musical notation for finger 2. The treble clef staff shows a quarter note on the second line (G4). The bass clef staff is empty.

3



Musical notation for finger 3. The treble clef staff shows a quarter note on the third line (A4). The bass clef staff is empty.



5



1



2



2

5

3

1

3

4

2

1

5

1

4

Musical notation for exercise 1, consisting of two staves. The top staff is in treble clef and contains a whole rest followed by four quarter notes (G4, A4, B4, C5) and a whole rest. The bottom staff is in bass clef and contains a whole rest followed by three quarter notes (G3, A3, B3) and a whole rest. The number '1' is positioned above the first staff, and the number '4' is positioned below the second staff.

5

5

Musical notation for exercise 5, consisting of two staves. The top staff is in treble clef and contains a quarter note (G4), a quarter note (A4), a half note (B4), and a whole rest. The bottom staff is in bass clef and contains a whole rest followed by three quarter notes (G3, A3, B3) and a whole rest. The number '5' is positioned above the first staff, and the number '5' is positioned below the second staff.

2

3

Musical notation for exercise 2, consisting of two staves. The top staff is in treble clef and contains a whole rest followed by three quarter notes (G4, A4, B4) and a whole rest. The bottom staff is in bass clef and contains three quarter notes (G3, A3, B3) followed by a whole rest. The number '2' is positioned above the first staff, and the number '3' is positioned below the second staff.

2

3

Musical notation for exercise 2, consisting of two staves. The top staff is in treble clef and contains a whole rest followed by four quarter notes (G4, A4, B4, C5) and a whole rest. The bottom staff is in bass clef and contains two quarter notes (G3, A3) followed by a whole rest. The number '2' is positioned above the first staff, and the number '3' is positioned below the second staff.

3

1
5

Detailed description: This system shows a treble clef staff with a triplet of eighth notes (G4, A4, B4) in the first measure, followed by two measures of eighth notes (B4, A4, G4, F4, E4, D4). The bass clef staff has a whole note chord of G3 and B2 in the first measure, and a whole note chord of G3 and B2 in the second measure, with a slur connecting the two measures.

3

1
5

Detailed description: This system shows a treble clef staff with a triplet of eighth notes (G4, A4, B4) in the first measure, followed by two measures of eighth notes (B4, A4, G4, F4, E4, D4). The bass clef staff has a whole note chord of G3 and B2 in the first measure, and a whole note chord of G3 and B2 in the second measure, with a slur connecting the two measures.

3

5

Detailed description: This system shows a treble clef staff with a triplet of eighth notes (G4, A4, B4) in the first measure, followed by two measures of eighth notes (B4, A4, G4, F4, E4, D4). The bass clef staff has a whole note chord of G3 and B2 in the first measure, and a whole note chord of G3 and B2 in the second measure, with a slur connecting the two measures.

4

5

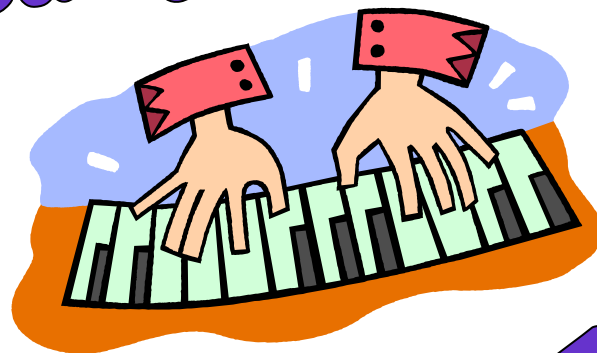
Detailed description: This system shows a treble clef staff with a triplet of eighth notes (G4, A4, B4) in the first measure, followed by two measures of eighth notes (B4, A4, G4, F4, E4, D4). The bass clef staff has a whole note chord of G3 and B2 in the first measure, and a whole note chord of G3 and B2 in the second measure, with a slur connecting the two measures.

Ready, Set,



Start!!

Ready, Set,



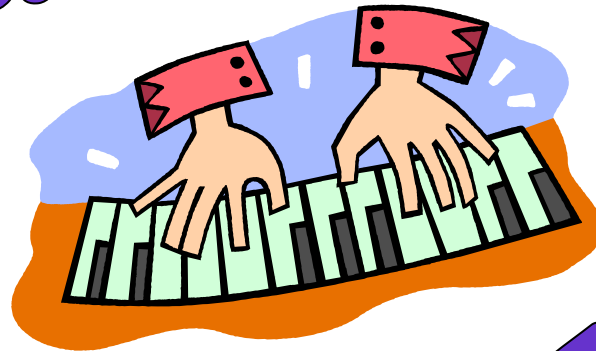
Start!!

Ready, Set,



Start!!

Ready, Set,



Start!!