

C#

D \flat

D#

E \flat

E#

F \sharp

F#

G \flat

G#

A^b

A[#]

B^b

B[#]

C⁴

C^b

B⁴

F^b

E⁴

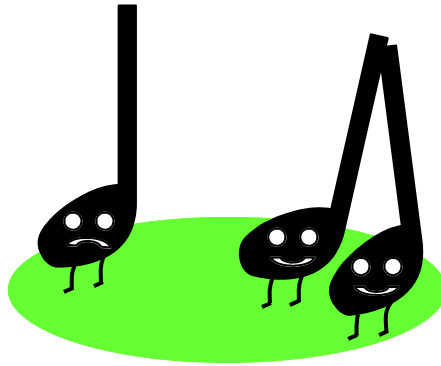
		
		
		







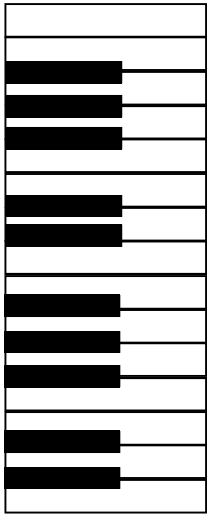
Lonely



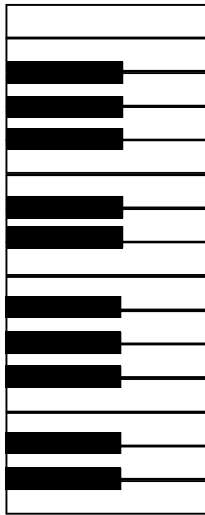
Note

Instructions

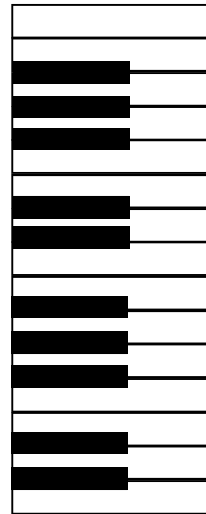
1. Shuffle and deal all cards so they are evenly distributed between players.
2. Players pull any enharmonic paired notes from their hand and lay them on the ground in front of them, face up. Letter cards should pair with letter cards and staff cards pair with staff cards.
3. Start with the player to the dealer's left. That player chooses a card from the dealer's hand. If the player draws a card that makes a pair, they may lay it down in front of them. If not, play continues to the left. For each turn, players chooses a card from the person sitting to their right.
4. The first player to run out of cards wins. Play continues until only one player is left holding the Lonely Note card.



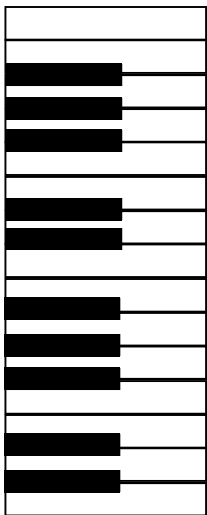
Reference Card



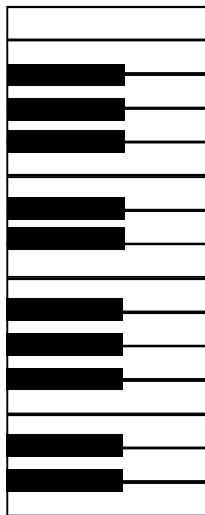
Reference Card



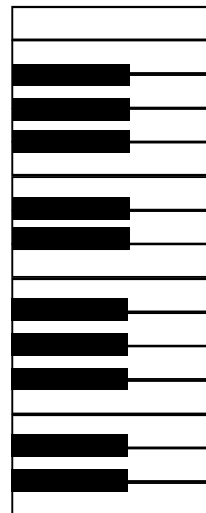
Reference Card



Reference Card

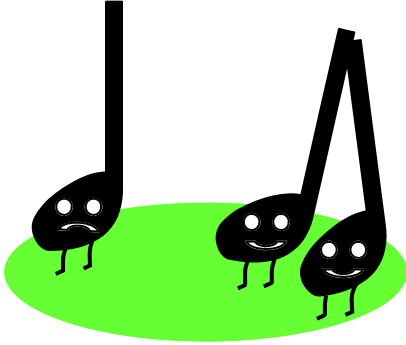


Reference Card



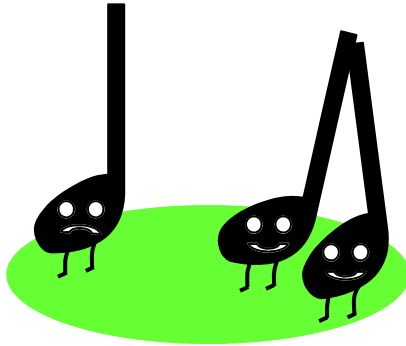
Reference Card

Lonely



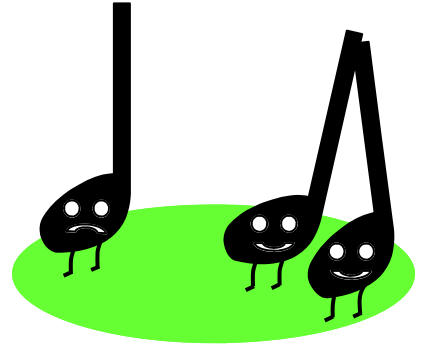
Note

Lonely



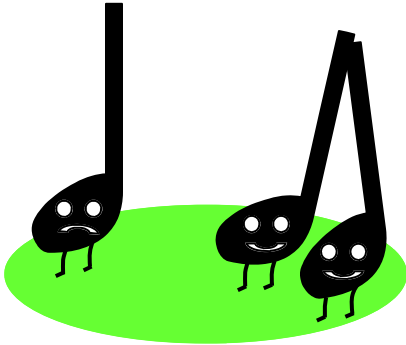
Note

Lonely



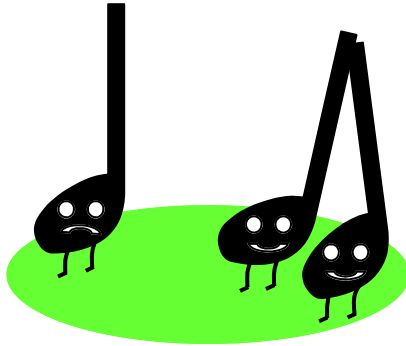
Note

Lonely



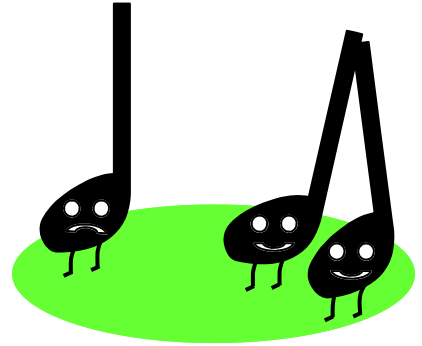
Note

Lonely



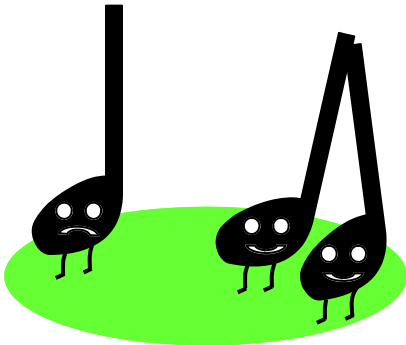
Note

Lonely



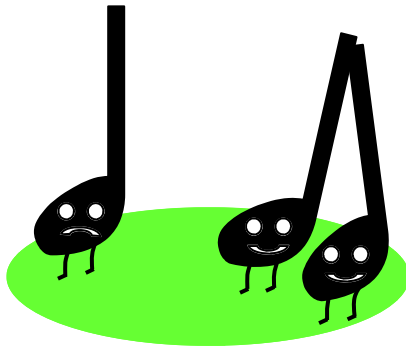
Note

Lonely



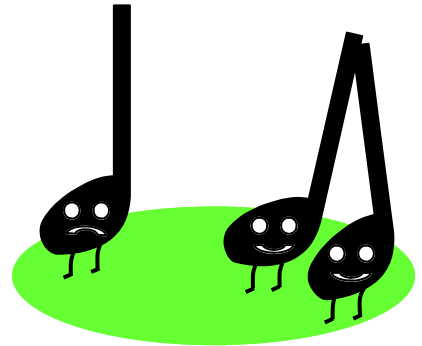
Note

Lonely



Note

Lonely



Note