



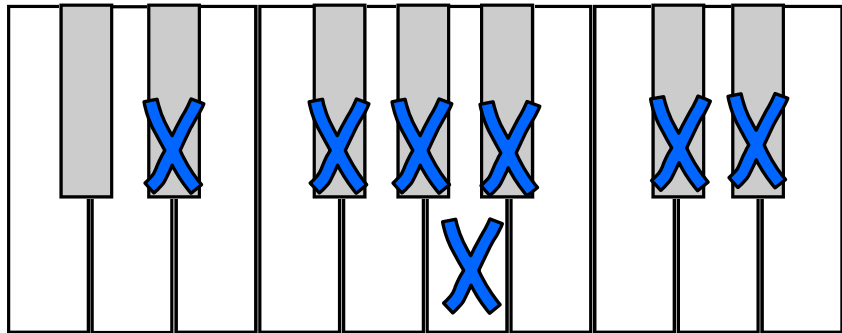
Rhythm & Blues

Improv #1



Experiment with the notes of the **Eb Blues Scale**. Create a melody using any combination of notes—you can't go wrong! Just make sure to end your song with an **Eb** (it's the tonic pitch).

**Eb Blues
Scale:**



Think of 4 unique rhythm patterns, each 8 beats long. Write one in each box below.

Now, improvise melodies for each rhythm pattern using the notes of the blues scale!

Try playing a duet with your teacher. Your teacher will play an 8 beat pattern, then you will answer back with one of your own. Continue back and forth until you've created a song!

Then, play the duet with yourself! Let your left hand play with one pattern, then your right hand answer back with another pattern. Keep going—you're playing the blues!!



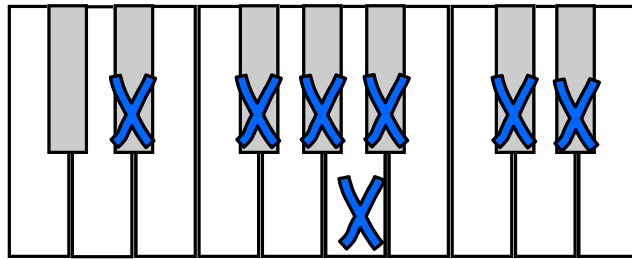
Rhythm & Blues

Improv #2

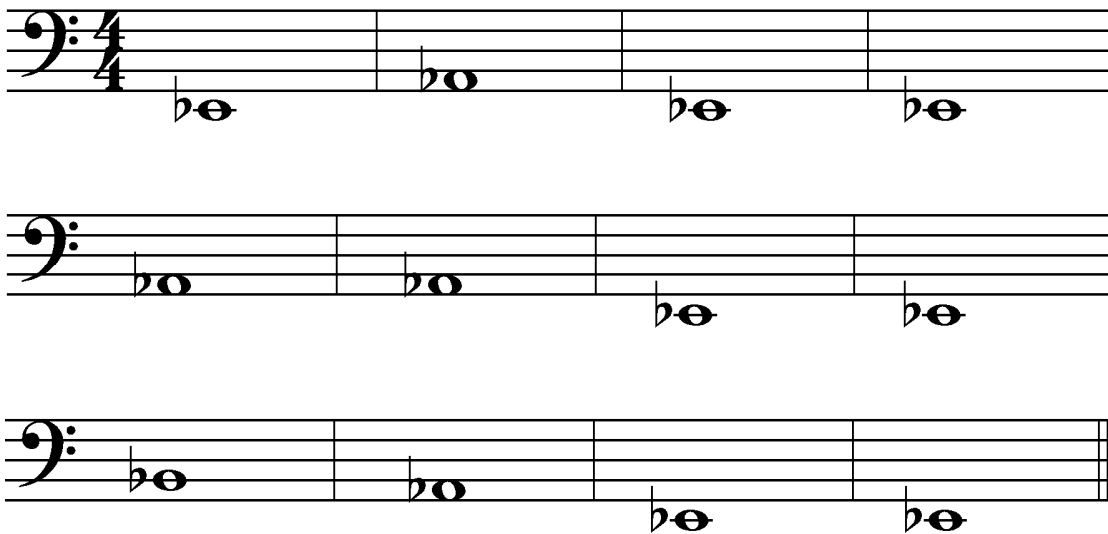


Use the notes of the Eb Blues Scale to create a melody with your right hand. Anything goes, just be sure to end the song with an Eb!

**Eb Blues
Scale:**



Play this **12-bar blues** pattern in your left hand to accompany your melody.



Feeling pretty good about playing the blues? Give yourself an extra challenge! Write 4 unique measures of rhythm, each **4 beats** long, in the boxes below. Then, incorporate each measure into your melody as you play the 2-handed blues!



Blues Improv #3

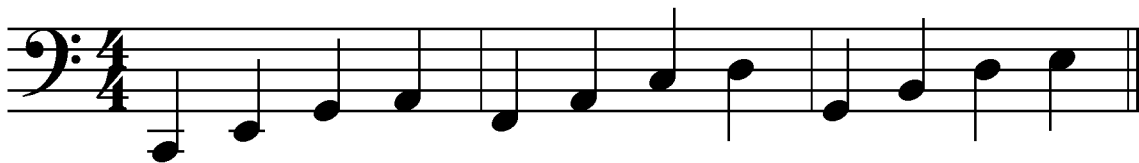


Practice these walking bass patterns in your left hand. These patterns are built on the **1st, 4th and 5th** steps of the C scale.

C pattern (I)

F pattern (IV)

G pattern (V)

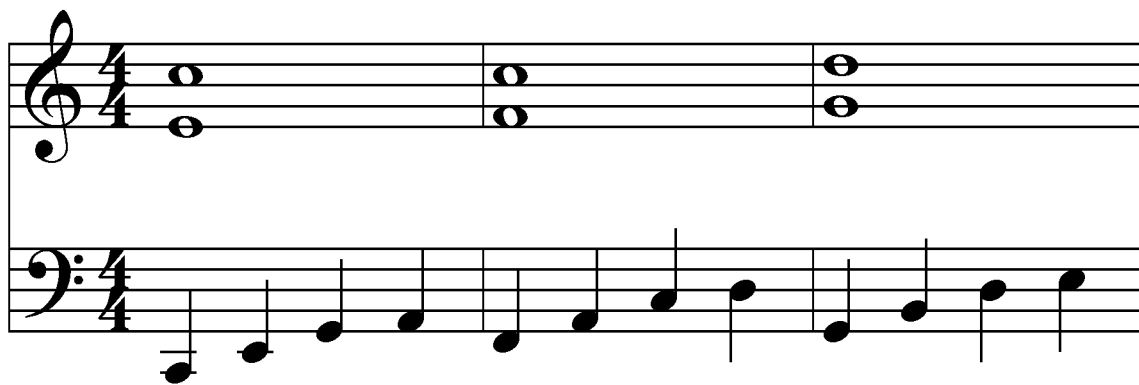


When you can play the bass, add these simple right hand chords to each pattern:

C pattern (I)

F pattern (IV)

G pattern (V)



Practice moving from pattern to pattern, then mix them up and improvise a whole song! Just remember to start and end with the C pattern—it's tonic.

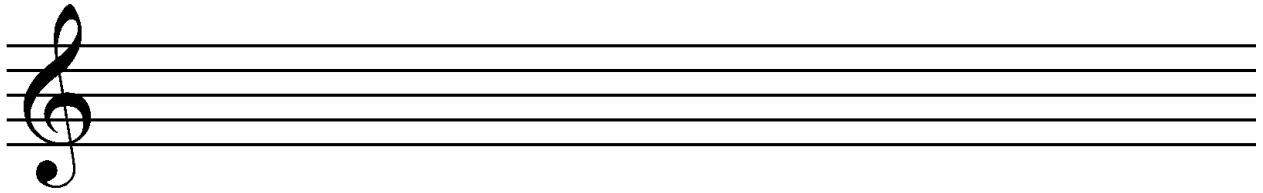
If you're feeling creative, try adding some jazzy rhythms to the chords in your right hand!



Blues Improv #4



Draw the notes of the **C Blues Scale**. You will use these to create a right hand melody.

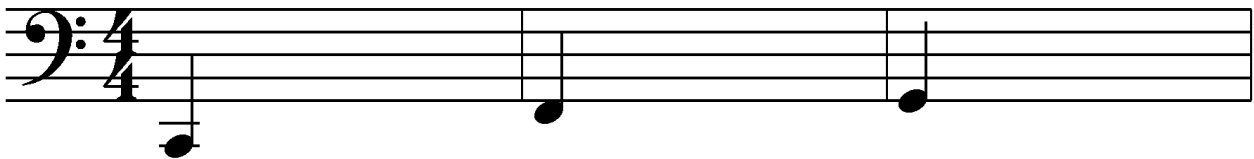


Write 4-beat walking bass patterns starting on each of these primary notes.

C pattern (I)

F pattern (IV)

G pattern (V)



Improvise a melody with your right hand while playing walking bass patterns in your left hand.

Once you're comfortable playing hands together, you're ready for the **12 Bar Blues!**



The 12 Bar Blues



Fill in the name of a blues scale, and draw it's notes on the staff below. Use these notes to improvise a right hand melody. Any notes you choose will work, just be sure to end with the tonic note.

___ Blues
Scale:

Name the starting note for each of these left hand patterns:

I Pattern: ___

IV Pattern: ___

V Pattern: ___

Use this sequence of patterns in your left hand. Each pattern will last for one 4-beat measure.

I	IV	I	I
IV	IV	I	I
V	IV	I	I